

Corangamite Catchment Management Authority Ecological Vegetation Classes (EVC)

Legend

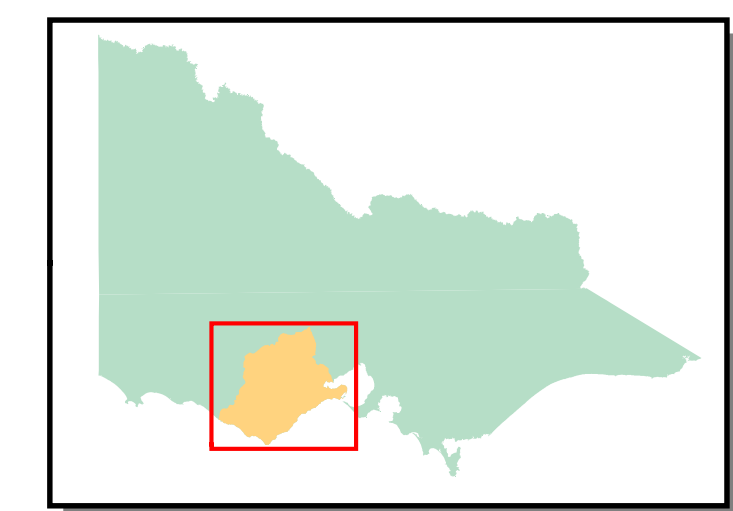
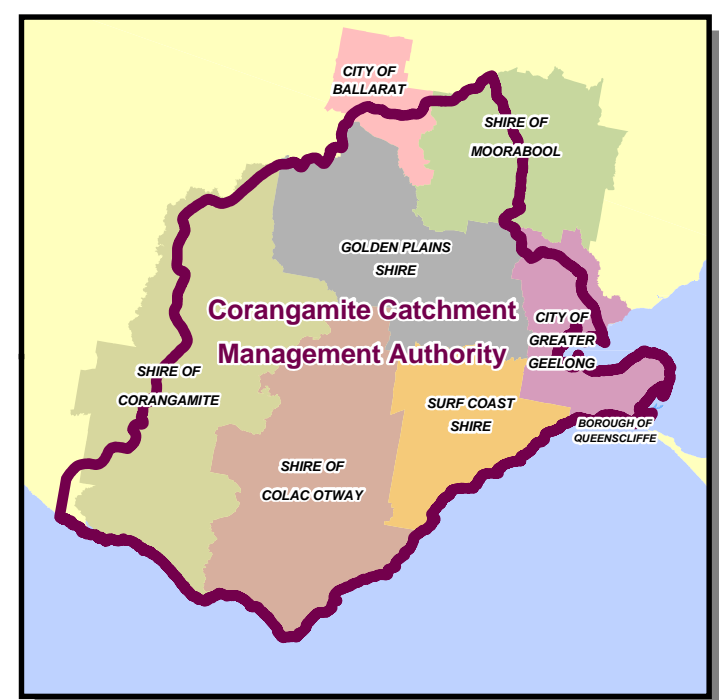
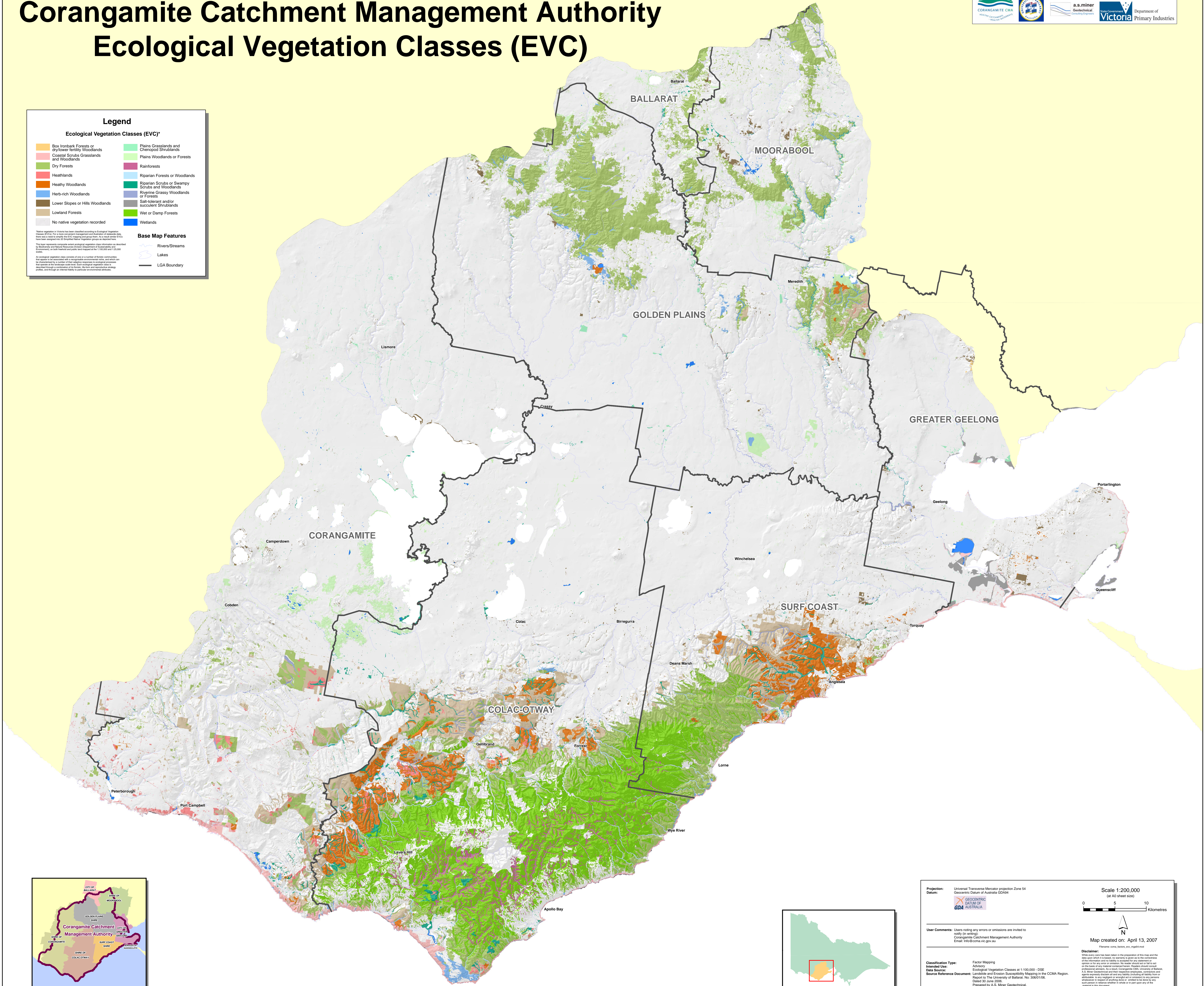
Ecological Vegetation Classes (EVC)*

Box Ironbark Forests or dry/low fertile Woodlands	Plains Grasslands and Chenopod Scrublands
Coastal Scrubs Grasslands and Woodlands	Plains Woodlands or Forests
Dry Forests	Rainforests
Heathlands	Riparian Forests or Woodlands
Healthy Woodlands	Riparian Scrubs or Swampy Scrubs and Woodlands
Herb-rich Woodlands	Riverine Grassy Woodlands or Forests
Lower Slopes or Hills Woodlands	Salt-tolerant and/or succulent Shrublands
Lowland Forests	Wet or Damp Forests
No native vegetation recorded	Wetlands

Base Map Features

- Rivers/Streams
- Lakes
- LGA Boundary

*Native vegetation in Victoria has been classified according to Ecological Vegetation Classes (EVC) for state government management and reporting purposes. The EVCs have been developed by the Victorian Government and are based on the Victorian Ecological Vegetation Classifications (EVC) system. The EVCs are based on the Victorian Ecological Vegetation Classifications (EVC) system. The EVCs are based on the Victorian Ecological Vegetation Classifications (EVC) system. The EVCs are based on the Victorian Ecological Vegetation Classifications (EVC) system.



Projection: Universal Transverse Mercator projection Zone 54
Datum: Geocentric Datum of Australia GDA84

Scale: 1:200,000 (at A3 sheet size)

User Comments: Users noting any errors or omissions are invited to notify WISZ.
 Corangamite Catchment Management Authority
 Email: info@ccma.vic.gov.au

Classification Type: Factor Mapping
Interpret: Authority
Data Source: Ecological Vegetation Classes at 1:100,000 - DSE
Source Reference Document: Landscape and Erosion Susceptibility Mapping in the CCMA Region, Report to The University of Ballarat, No. 30601/06, Dated 20 June 2006.
 Prepared by A.S. Miner Geotechnical.

Disclaimer: While every care has been taken in the preparation of this map and the data upon which it is based, the Corporation is not responsible for any errors or omissions. The reader should not rely on this map for any purpose other than that for which it was prepared. The Corporation is not responsible for any errors or omissions. The reader should not rely on this map for any purpose other than that for which it was prepared. The Corporation is not responsible for any errors or omissions. The reader should not rely on this map for any purpose other than that for which it was prepared.

Map created on: April 13, 2007