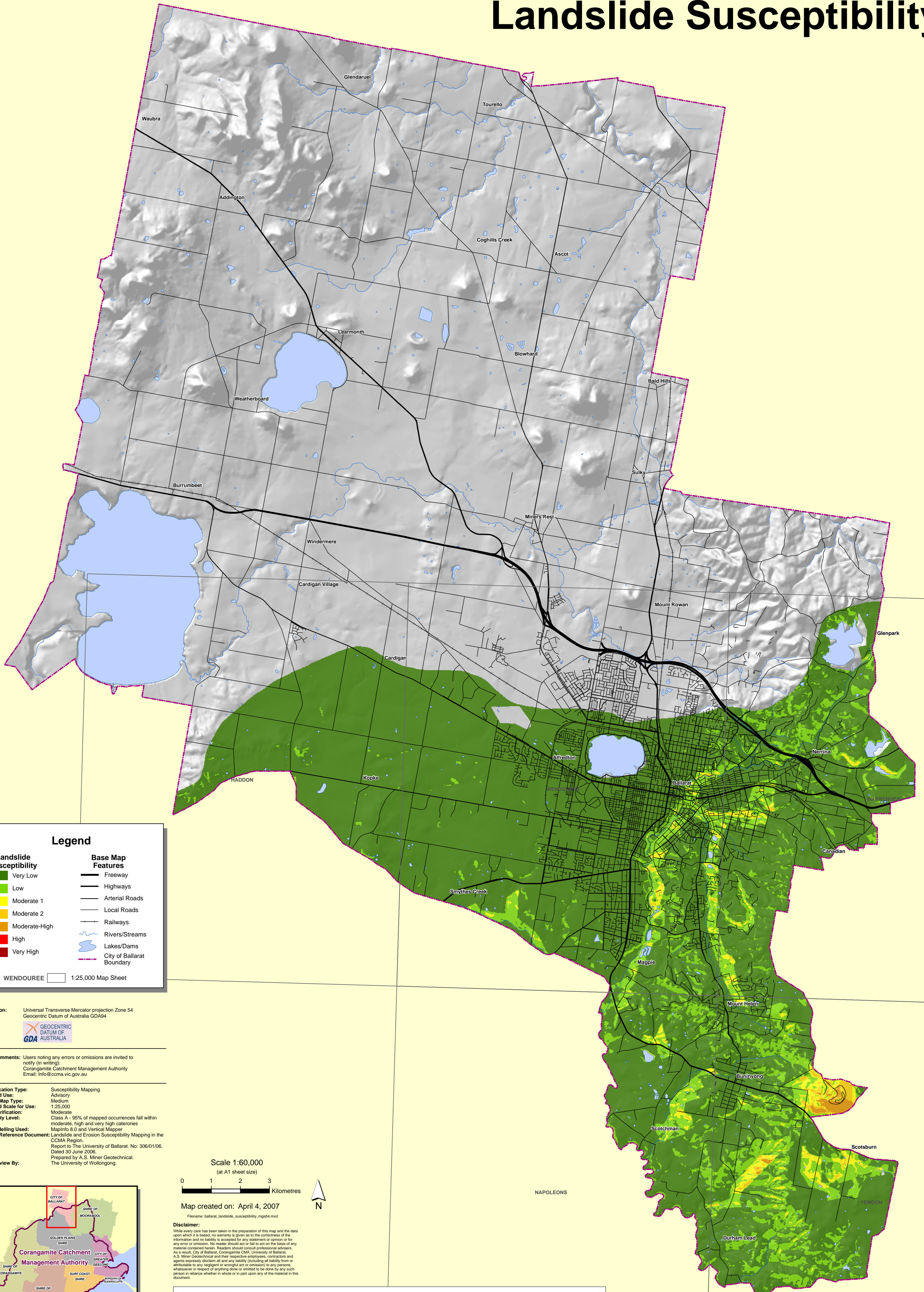


City of Ballarat Landslide Susceptibility



Legend

| | |
|---------------------------------|---------------------------|
| Landslide Susceptibility | Base Map Features |
| Very Low | Freeway |
| Low | Highways |
| Moderate 1 | Arterial Roads |
| Moderate 2 | Local Roads |
| Moderate-High | Railways |
| High | Rivers/Streams |
| Very High | Lakes/Dams |
| | City of Ballarat Boundary |

WENDOUREE 1:25,000 Map Sheet

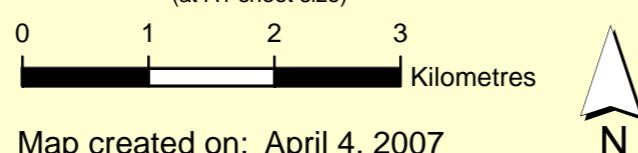
Projection: Universal Transverse Mercator projection Zone 54
Datum: Geocentric Datum of Australia GDA94



User Comments: Users noting any errors or omissions are invited to notify (in writing):
Corangamite Catchment Management Authority
Email: info@ccma.vic.gov.au

Classification Type: Susceptibility Mapping
Intended Use: Advisory
Zoning Map Type: Medium
Intended Scale for Use: 1:25,000
Field Verification: Moderate
Reliability Level: Class A - 95% of mapped occurrences fall within moderate, high and very high categories
GIS Modelling Used: MapInfo 8.0 and Vertical Mapper
Source Reference Document: Landslide and Erosion Susceptibility Mapping in the CCMA Region. Report to The University of Ballarat. No. 306/01/06. Dated 30 June 2006.
Peer Review By: Prepared by A.S. Miner Geotechnical. The University of Wollongong.

Scale 1:60,000
(at A1 sheet size)



Map created on: April 4, 2007

Filename: ballarat_landslide_susceptibility_mgs4.mxd
Disclaimer:
While every care has been taken in the preparation of this map and the data upon which it is based, no warranty is given as to the correctness of the information and no liability is accepted for any statement or opinion or for any error or omission. No reader should act or fail to act on the basis of any material contained herein. Readers should consult professional advisers. As a result, City of Ballarat, Corangamite CMA, University of Ballarat, A.S. Miner Geotechnical and their respective employees, contractors and agents expressly disclaim all and any liability (including all liability from or attributable to any negligent or wrongful act or omission) to any persons whatsoever in respect of anything done or omitted to be done by any such person in reliance whether in whole or in part upon any of the material in this document.

