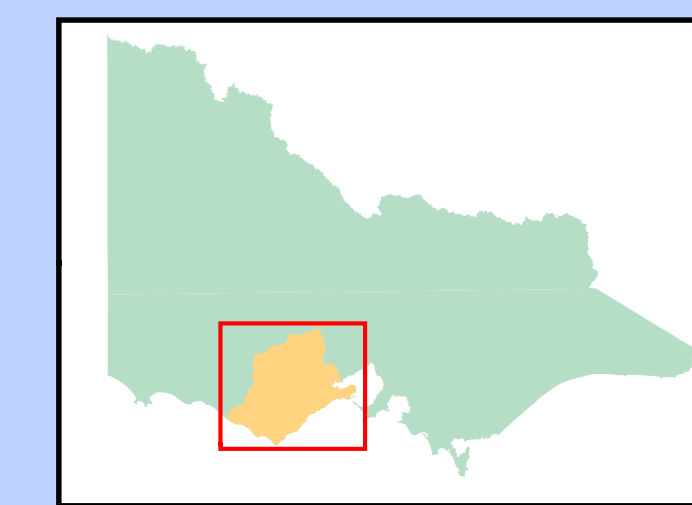
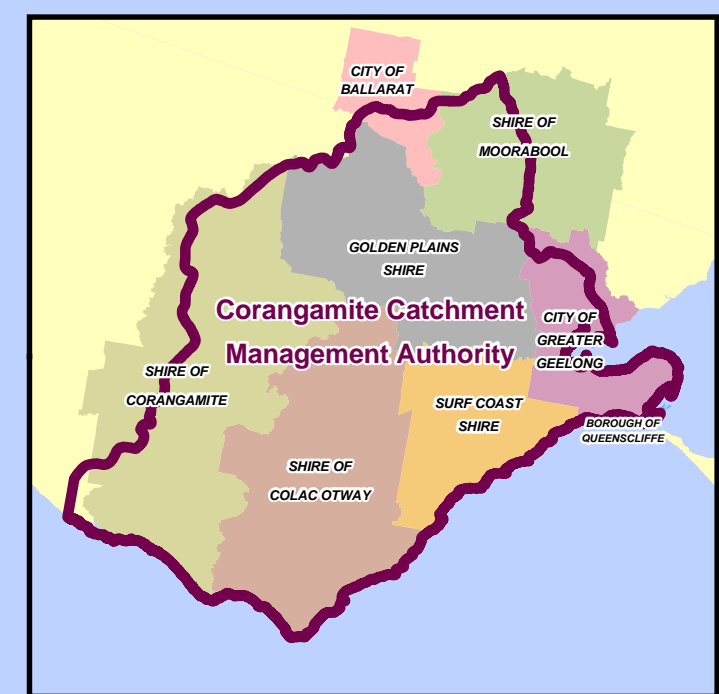
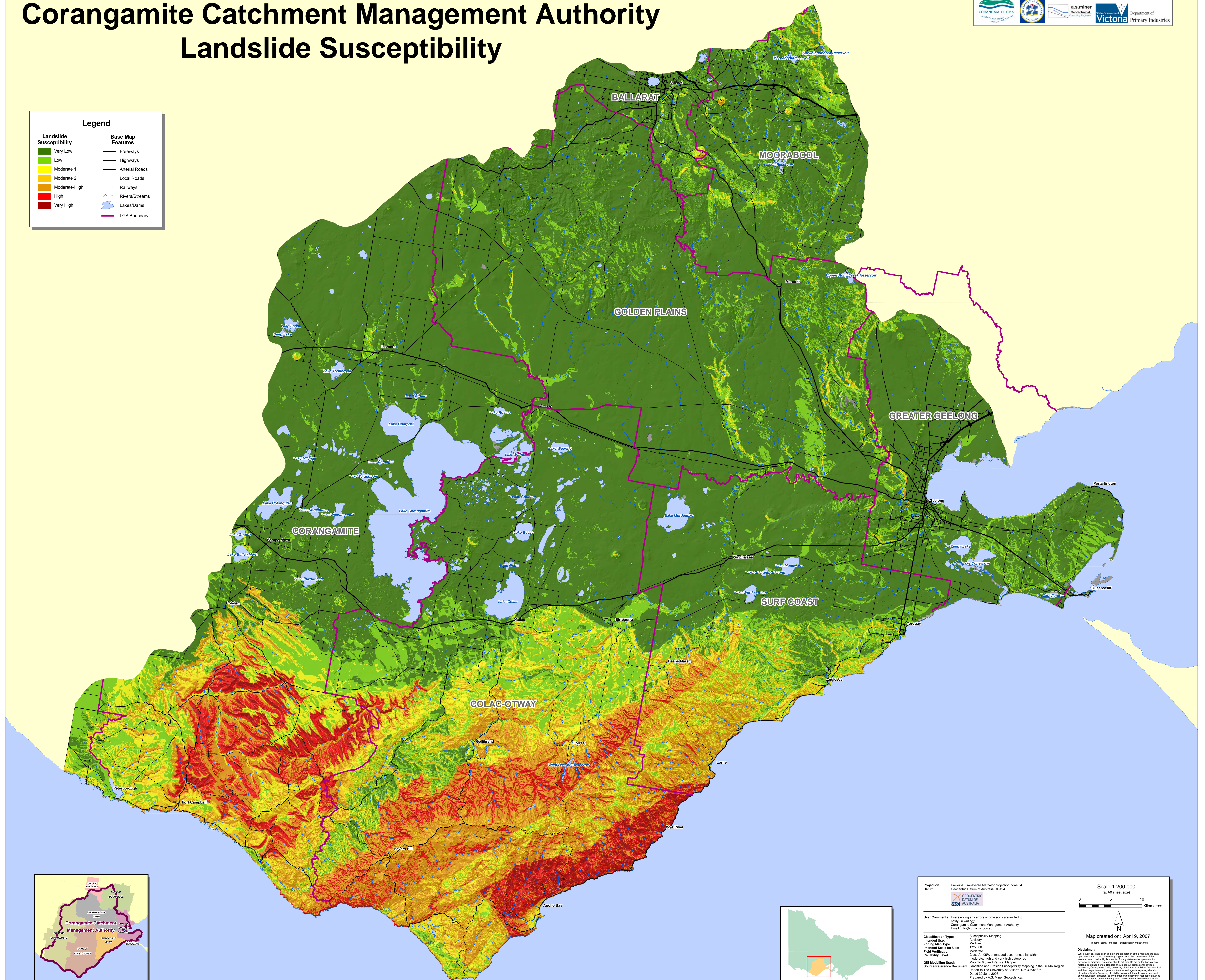


Corangamite Catchment Management Authority Landslide Susceptibility

Legend

Landslide Susceptibility	Base Map Features
Very Low	Freeways
Low	Highways
Moderate 1	Arterial Roads
Moderate 2	Local Roads
Moderate-High	Railways
High	Rivers/Streams
Very High	Lakes/Dams
	LGA Boundary



Projection: Universal Transverse Mercator projection Zone 54
Datum: Geocentric Datum of Australia GDA84

Scale: 1:200,000 (at A3 sheet size)

User Comments: Users noting any errors or omissions are invited to notify in writing: Corangamite Catchment Management Authority. Email: info@ccma.vic.gov.au

Classification Type: Susceptibility Mapping
Intended Use: Advisory
Zoning Map Type: Medium
Intended Scale for Use: 1:25,000
Field Verification: Moderate
Reliability Level: Class A - 95% of mapped occurrences fall within moderate, high and very high categories
GIS Modelling Used: Landslide and Erosion Susceptibility Mapping in the CCMA Region. Report to The University of Ballarat, No. 2006/036. Date: 30 June 2006. Prepared by A.S. Miner Geotechnical. The University of Wollongong.

Map created on: April 9, 2007

Disclaimer: While every effort has been taken in the preparation of this map and the data upon which it is based, the authority is not responsible for any errors or omissions or for any consequences or damages arising from the use of the map. The map is provided as a guide only and should not be used as a basis for any legal or financial decisions. The authority is not responsible for any damage or loss arising from the use of the map. The authority is not responsible for any damage or loss arising from the use of the map.