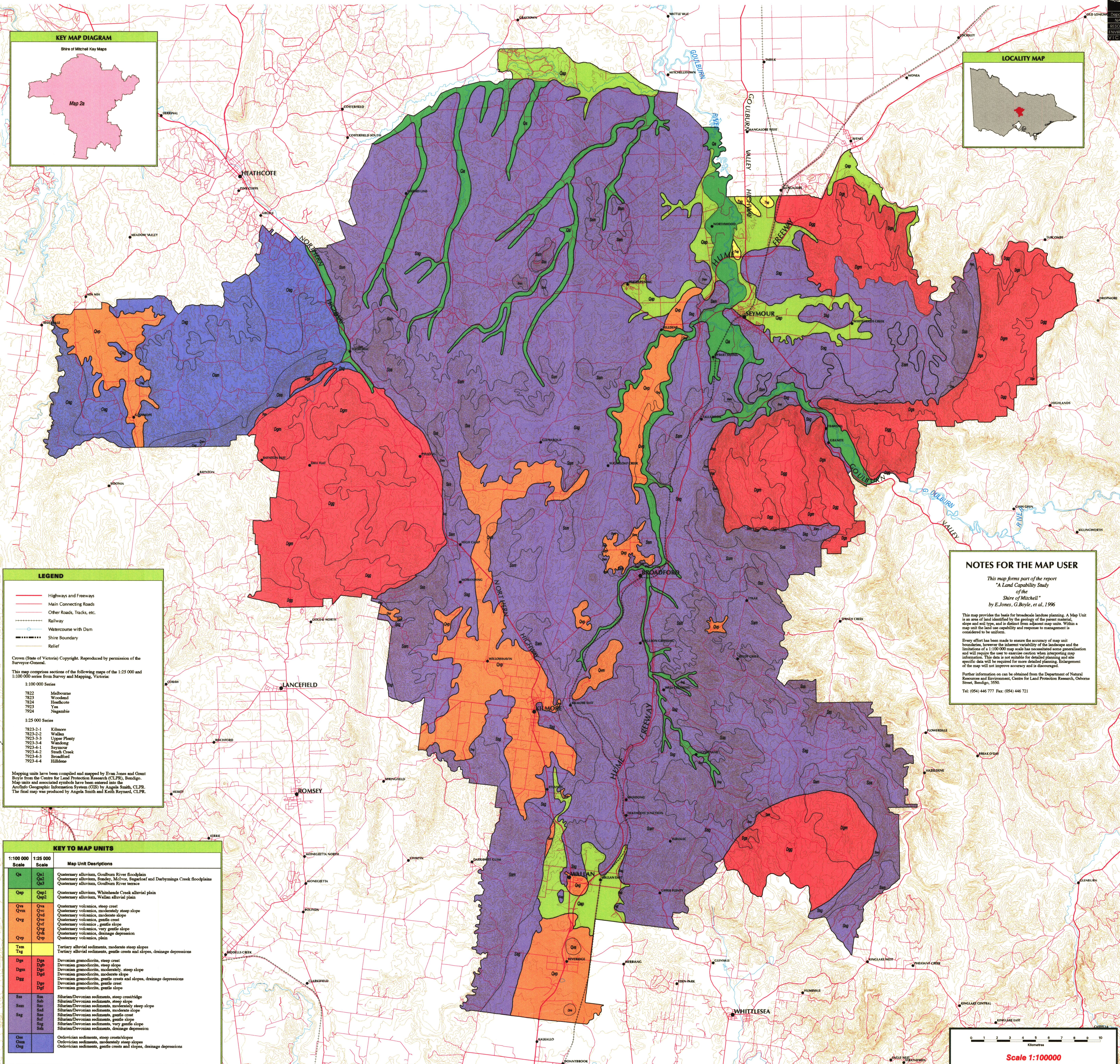
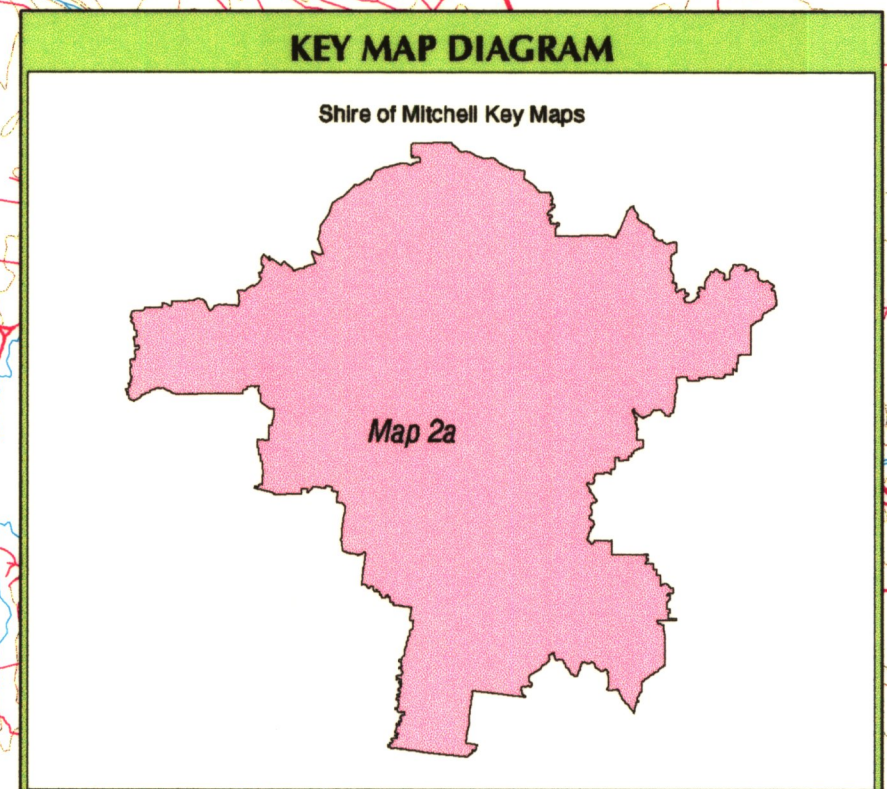
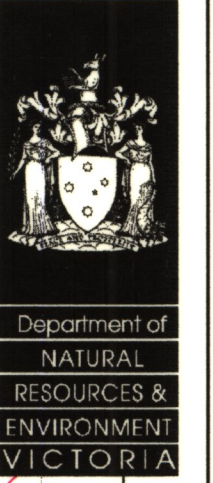


A LAND CAPABILITY STUDY of the SHIRE of MITCHELL

Map 2a: Map Units of the Shire of Mitchell



LEGEND

- Highways and Freeways
- Main Connecting Roads
- Other Roads, Tracks, etc.
- Railway
- Watercourse with Dam
- Shire Boundary
- Relief

Crown (State of Victoria) Copyright. Reproduced by permission of the Survey-General.

This map comprises sections of the following maps of the 1:25 000 and 1:100 000 series from Survey and Mapping, Victoria.

1:100 000 Series

- 7822 Mellbourne
- 7823 Woodend
- 7824 Heathcote
- 7923 Yes
- 7924 Nagambie

1:25 000 Series

- 7823-2-1 Kilmore
- 7823-2-2 Wallan
- 7923-3-3 Upper Plenty
- 7923-3-4 Wandong
- 7923-4-1 Seymour
- 7923-4-2 Shepparton
- 7923-4-3 Broadford
- 7923-4-4 Hillston

Mapping units have been compiled and mapped by Evan Jones and Grant Boyle from the Centre for Land Protection Research (CLPR), Bendigo. Map units and associated symbols have been entered into the ArcInfo Geographic Information System (GIS) by Angela Smith, CLPR. The final map was produced by Angela Smith and Keith Reynolds, CLPR.

NOTES FOR THE MAP USER

This map forms part of the report
 "A Land Capability Study
 of the
 Shire of Mitchell"
 by E. Jones, G. Boyle, et al, 1996

This map provides the basis for broadscale landuse planning. A Map Unit is an area of land identified by the geology of the parent material, slope and soil type, and is distinct from adjacent map units. Within a map unit the land use capability and response to management is considered to be uniform.

Every effort has been made to ensure the accuracy of map unit boundaries, however the inherent variability of the landscape and the limitations of a 1:100 000 map scale has necessitated some generalisation and will require the user to exercise caution when interpreting any information. This data is not suitable for detailed planning and site specific data will be required for more detailed planning. Enlargement of the map will not improve accuracy and is discouraged.

Further information can be obtained from the Department of Natural Resources and Environment, Centre for Land Protection Research, Ombrose Street, Bendigo, 3550.

Tel: (054) 446 777 Fax: (054) 446 721

KEY TO MAP UNITS

1:100 000 Scale	1:25 000 Scale	Map Unit Descriptions
Qc	Qc1	Quaternary alluvium, Goulburn River floodplain
	Qc2	Quaternary alluvium, Sunday, McIvor, Sugarloaf and Durbyrnies Creek floodplains
	Qc3	Quaternary alluvium, Goulburn River terrace
Qsp	Qsp1	Quaternary alluvium, Whilshanda Creek alluvial plain
	Qsp2	Quaternary alluvium, Wallan alluvial plain
Qvs	Qvs	Quaternary volcanics, steep crest
Qvm	Qvm	Quaternary volcanics, moderately steep slope
Qv	Qv	Quaternary volcanics, moderate slope
Qvf	Qvf	Quaternary volcanics, gentle slope
Qvp	Qvp	Quaternary volcanics, very gentle slope
Qvd	Qvd	Quaternary volcanics, drainage depression
Qvp	Qvp	Quaternary volcanics, plain
Tm	Tm	Tertiary alluvial sediments, moderate steep slopes
Td	Td	Tertiary alluvial sediments, gentle crests and slopes, drainage depressions
Dps	Dps	Devonian granodiorite, steep crest
Dpb	Dpb	Devonian granodiorite, steep slope
Dpm	Dpm	Devonian granodiorite, moderately steep slope
Dps	Dps	Devonian granodiorite, moderate slope
Dpg	Dpg	Devonian granodiorite, gentle crests and slopes, drainage depressions
Dpf	Dpf	Devonian granodiorite, gentle slope
Dpd	Dpd	Devonian granodiorite, gentle slope
Ssa	Ssa	Silurian/Devonian sediments, steep crest/ridge
Ssb	Ssb	Silurian/Devonian sediments, steep slope
Ssc	Ssc	Silurian/Devonian sediments, moderately steep slope
Ssd	Ssd	Silurian/Devonian sediments, moderate slope
Sse	Sse	Silurian/Devonian sediments, gentle crest
Ssf	Ssf	Silurian/Devonian sediments, gentle slope
Ssg	Ssg	Silurian/Devonian sediments, very gentle slope
Ssd	Ssd	Silurian/Devonian sediments, drainage depression
Osa	Osa	Ordovician sediments, steep crest/ridge
Osb	Osb	Ordovician sediments, steep slope
Osm	Osm	Ordovician sediments, moderately steep slopes
Osd	Osd	Ordovician sediments, moderate slope
Osg	Osg	Ordovician sediments, gentle crests and slopes, drainage depressions

