

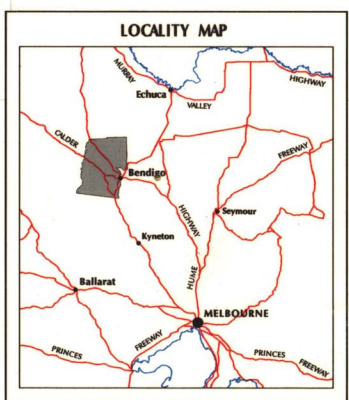
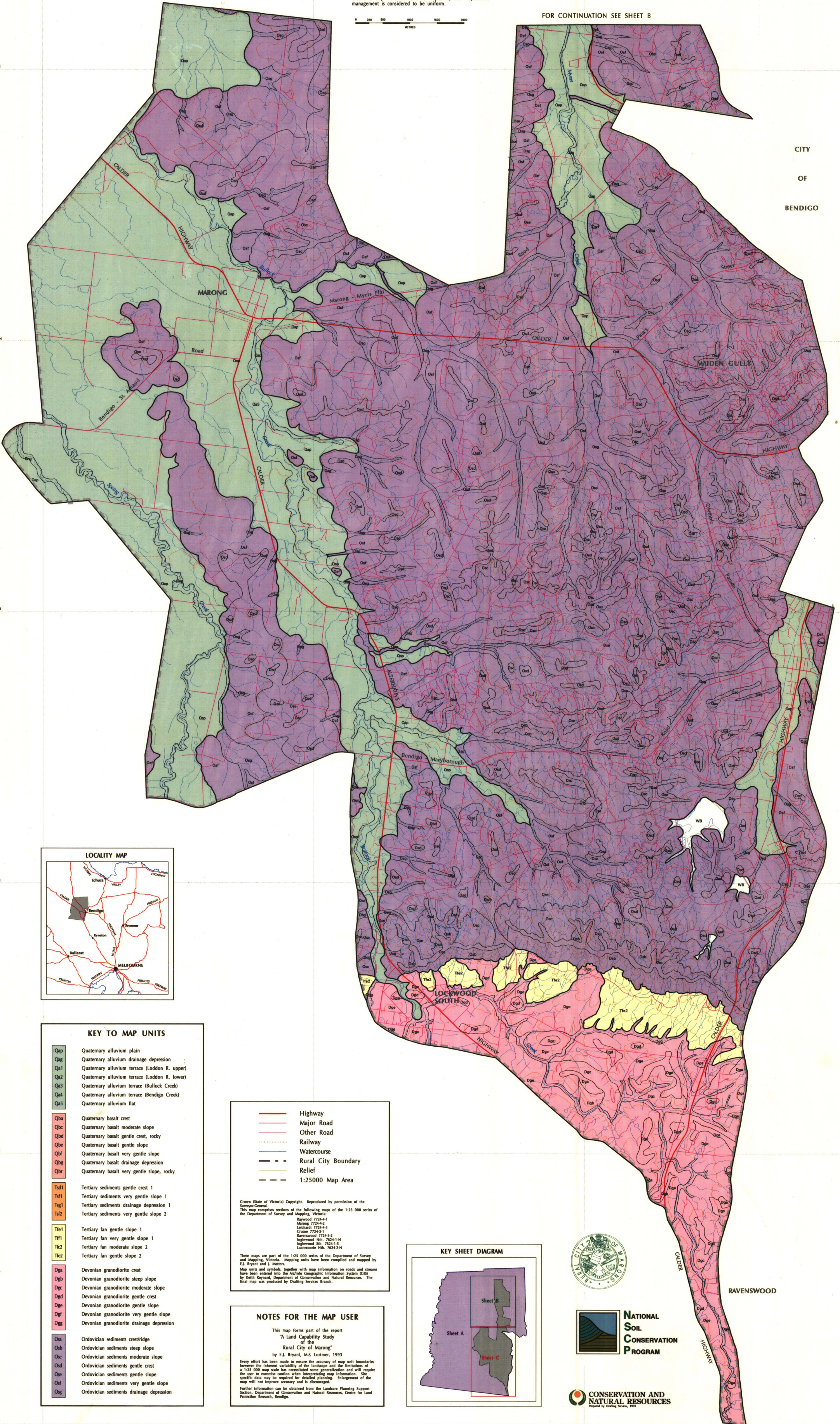
# A LAND CAPABILITY STUDY of the RURAL CITY OF MARONG

## Map 1c: Map Units (1:25 000 data)

This map provides the basis for land capability assessment.  
 A Map Unit is an area of land that is identified by the geology of the parent material, slope and soil type, and is distinct from adjacent Map Units.  
 Within a Map Unit the land use capability and response to management is considered to be uniform.



FOR CONTINUATION SEE SHEET B



KEY TO MAP UNITS	
Qap	Quaternary alluvium plain
Qaq	Quaternary alluvium drainage depression
Qa1	Quaternary alluvium terrace (Loddon R. upper)
Qa2	Quaternary alluvium terrace (Loddon R. lower)
Qa3	Quaternary alluvium terrace (Bullock Creek)
Qa4	Quaternary alluvium terrace (Bendigo Creek)
Qa5	Quaternary alluvium flat
Qba	Quaternary basalt crest
Qbc	Quaternary basalt moderate slope
Qbd	Quaternary basalt gentle crest, rocky
Qbe	Quaternary basalt gentle slope
Qbf	Quaternary basalt very gentle slope
Qbg	Quaternary basalt drainage depression
Qbr	Quaternary basalt very gentle slope, rocky
Ts1	Tertiary sediments gentle crest 1
Ts1	Tertiary sediments very gentle slope 1
Ts1	Tertiary sediments drainage depression 1
Ts2	Tertiary sediments very gentle slope 2
Tf1	Tertiary fan gentle slope 1
Tf1	Tertiary fan very gentle slope 1
Tf2	Tertiary fan moderate slope 2
Tf2	Tertiary fan gentle slope 2
Dga	Devonian granodiorite crest
Dgb	Devonian granodiorite steep slope
Dgc	Devonian granodiorite moderate slope
Dgd	Devonian granodiorite gentle crest
Dge	Devonian granodiorite gentle slope
Dgf	Devonian granodiorite very gentle slope
Dgg	Devonian granodiorite drainage depression
Osa	Ordovician sediments crest/ridge
Osb	Ordovician sediments steep slope
Osc	Ordovician sediments moderate slope
Osd	Ordovician sediments gentle crest
Ose	Ordovician sediments gentle slope
Osf	Ordovician sediments very gentle slope
Osg	Ordovician sediments drainage depression

	Highway
	Major Road
	Other Road
	Railway
	Watercourse
	Rural City Boundary
	Relief
	1:25000 Map Area

Crown (State of Victoria) Copyright. Reproduced by permission of the Survey-General.  
 This map comprises sections of the following maps of the 1:25 000 series of the Department of Survey and Mapping, Victoria:  
 Raymond 7724-4-1  
 Marong 7724-4-2  
 Leichardt 7724-4-3  
 Crooke 7724-3-1  
 Ravenswood 7724-3-2  
 Inglewood Nth. 7624-1-N  
 Inglewood Sth. 7624-1-S  
 Langwoolie Nth. 7624-2-N

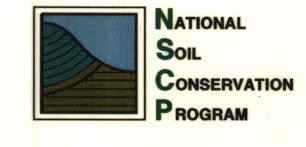
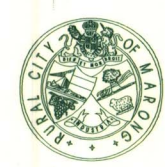
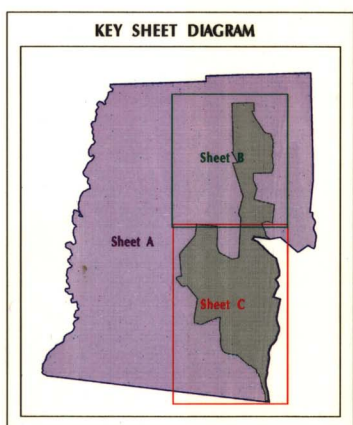
These maps are part of the 1:25 000 series of the Department of Survey and Mapping, Victoria. Mapping units have been compiled and mapped by E.J. Bryant and J. Metten.  
 Map units and symbols, together with map information on roads and streams have been entered into the ArcInfo Geographic Information System (GIS) by Keith Reynard, Department of Conservation and Natural Resources. The final map was produced by Drafting Services Branch.

**NOTES FOR THE MAP USER**

This map forms part of the report  
 'A Land Capability Study  
 of the  
 Rural City of Marong',  
 by E.J. Bryant, M.S. Lorimer, 1993

Every effort has been made to ensure the accuracy of map unit boundaries however the inherent variability of the landscape and the limitations of a 1:25 000 map scale has necessitated some generalization and will require the user to exercise caution when interpreting map information. Site specific data may be required for detailed planning. Enlargement of the map will not improve accuracy and is discouraged.

Further information can be obtained from the Landcare Planning Support Section, Department of Conservation and Natural Resources, Centre for Land Protection Research, Bendigo.



CITY  
OF  
BENDIGO

RAVENSWOOD