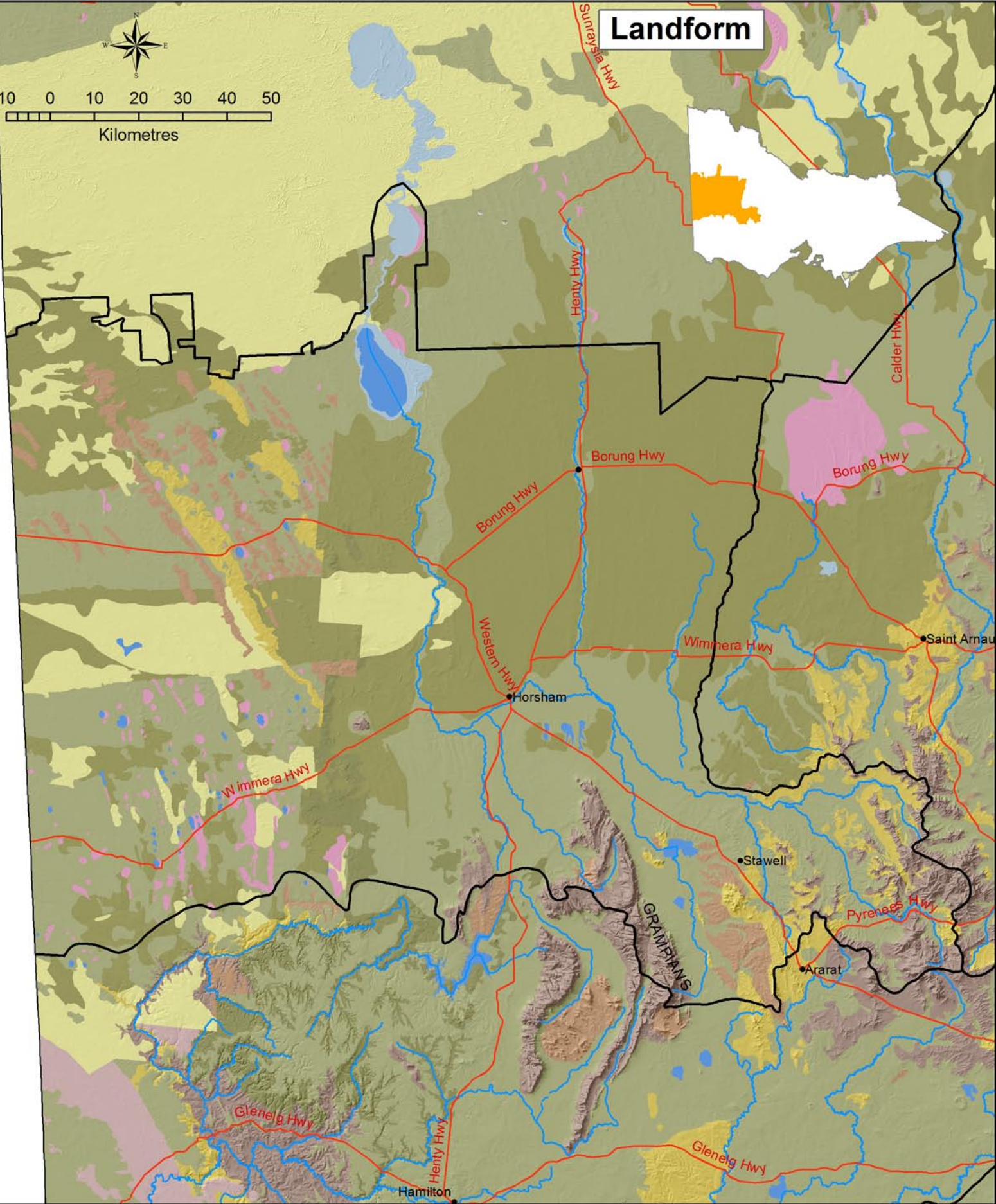
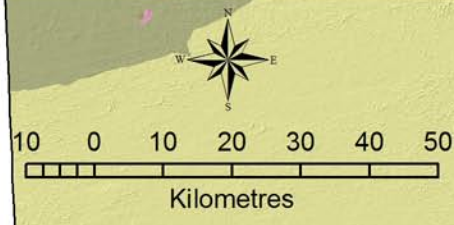













Landform



Landform

- | | |
|--|---|
|  Dune complex |  Rises |
|  Mountain (relative relief >300m) |  Rises complex |
|  Low hill (relative relief 30-90m) |  Swamp |
|  Plain above flood level (relative relief <9m) |  Coastal complex |
|  Plains complex |  Water bodies |
|  Present floodplain | |

Landforms of the Wimmera Region