

# Dairy Soils - Victoria

## Texture contrast soils

*dense, sodic subsoils*

**Sodosols**

*strongly acid subsoils*

**Kurosols**

*upper subsoils not sodic or strongly acid*

**Chromosols**

## Cracking clay soils

**Vertosols**

## Non-texture contrast soils

*structured gradational soils*

**Red Dermosols**

**Acidic Brown Dermosols**

**Yellow and Grey Dermosols**

**Black Dermosols (some Ferrosols)**

*friable, structured iron-rich soils*

**Red and Brown Ferrosols**

*weakly structured gradational soils*

**Kandosols**

*calcareous gradational soils*

**Calcarosols (medium texture)**

**Calcarosols (heavy texture)**

## Sandy soils

**Podosols (sandy soils with coffee rock)**

**Podosols and texture contrast soils with deep sandy surface horizons**

**Other sandy soils (Tenosols & Rudosols) and texture contrast soils with deep sandy surface horizons.**

**Calcareous sands**

## Weakly developed soils

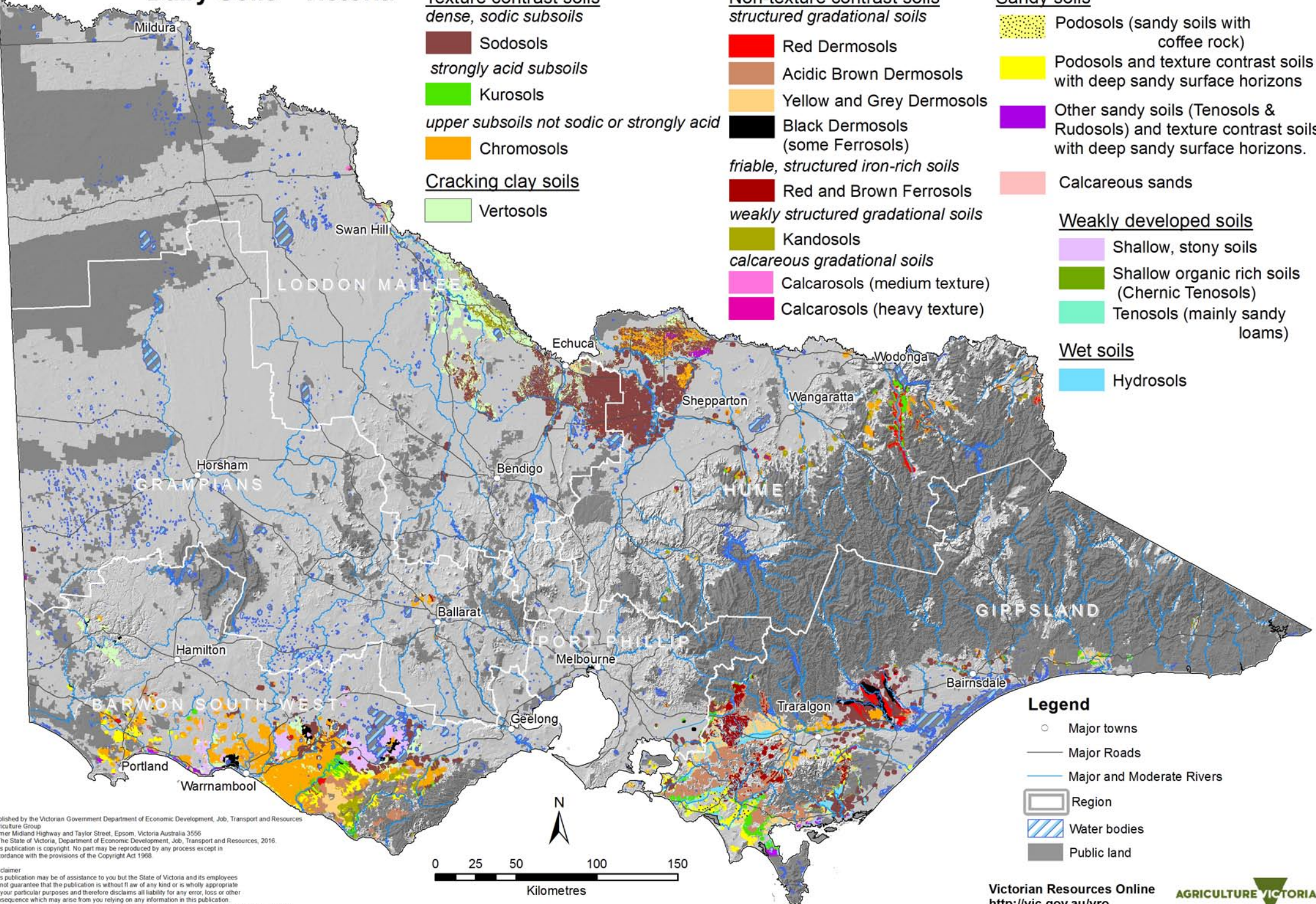
**Shallow, stony soils**

**Shallow organic rich soils (Chernic Tenosols)**

**Tenosols (mainly sandy loams)**

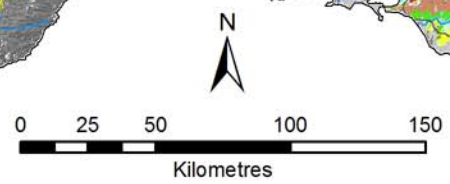
## Wet soils

**Hydrosols**



## Legend

- Major towns
- Major Roads
- Major and Moderate Rivers
- ▭ Region
- ▨ Water bodies
- Public land



Published by the Victorian Government Department of Economic Development, Job, Transport and Resources Agriculture Group  
 Corner Midland Highway and Taylor Street, Epsom, Victoria Australia 3556  
 © The State of Victoria, Department of Economic Development, Job, Transport and Resources, 2016.  
 This publication is copyright. No part may be reproduced by any process except in accordance with the provisions of the Copyright Act 1968.

Disclaimer  
 This publication may be of assistance to you but the State of Victoria and its employees do not guarantee that the publication is without flaw of any kind or is wholly appropriate for your particular purposes and therefore disclaims all liability for any error, loss or other consequence which may arise from you relying on any information in this publication.  
 For further information, visit the DEDJTR Website at <http://www.http://economicdevelopment.vic.gov.au/> or contact the DEDJTR Customer Service Centre on 136 186